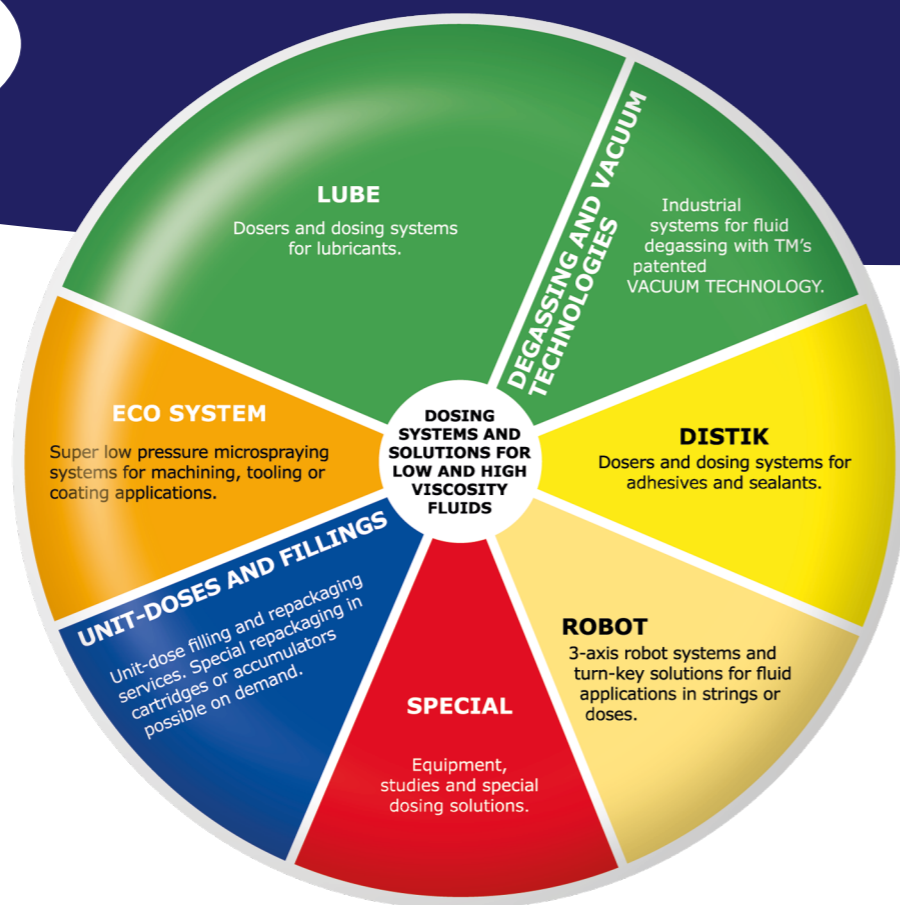




FLUID DISPENSING TECHNOLOGY



FLUID DISPENSING TECHNOLOGY



FLUID DOSING COMPONENTS



LOW PRESSURE VOLUMETRIC / METERING DOSERS WITH DIVORCED TECHNOLOGY

VVPPDV

FLUID DOSING SYSTEMS AND INTEGRATED SOLUTIONS



MACHINES FOR FLUID DOSING AND TREATMENT



TM reserves the right to change technical data, pictures or technical descriptions without prior notice.

TM srl • Via Cicogna 12-14
40068 San Lazzaro di Savena (BO) Italy
Tel. +39 051 6511012 • Fax: +39 051 796966
E-mail: tm-italia@tm-italia.it • www.tm-italia.it





Suitable for the following products:

Oils and lubricant greases, assembling pastes, low, mid and high viscosity fluids, resins, silicones, solvents and aggressive or abrasive fluids.

Impulsive volumetric dosers mod. **VVPPDV** are usually employed for the micro-dosing of industrial fluids in automatic assembling processes (of mechanical parts, couplings, valves, micro-electronics, etc...). Their special conception gives an extreme precision in dosing minimum quantities of product. Dosers **VVPPDV** generally work at low pressures (below 14bars) and guarantee the product integrity. They are even suitable for lubricants (volumetric cycles set by PLC) to lubricate complex machinery cyneatisms where the lubrication must be absolutely guaranteed. The volumetric dosers **VVPPDV** can work with frequency cyclic drives for doses in rapid succession. The divorced technology together with special gaskets gives greater compatibility in presence of aggressive or abrasive fluids and makes these dosers suitable for critical or severe situations.

The volumetric / metering dosers model **VVPPDV** guarantee:

- minimum and constant product quantities
- high dosing precision
- objectification of doses and cycles
- repeatability and reliability
- control of the process
- increase in quality
- increase in productivity
- clean components and machines
- product saving
- reduction of utilities consumption
- reduction of cycle time
- reduction of scrapped parts
- high constructive sturdiness
- divorced technology



Technical Code	Commercial Code	Description
G00001568	VVPP3DV	VOLUMETRIC DOSER VVPP3DV Precision impulsive volumetric doser with divorced technology and special shutter for aggressive/abrasive products. Maximum product supply pressure 14bar. Maximum compressed air pressure 10bar. Used with products with a tendency to dry, reticulate or polymerise (like resins) we suggest to jump the terminal nozzle into neutral oil, during the breaks, or to close it with the proper cap that will be later removed, at the following shift. In case of products with short pot life (such as two-components resins) an automatic periodic purge of the nozzle may be necessary. Dosing range from 0,003 to 0,100cc. <u>Pay attention: do not remove the inlet valve.</u> Approx. weight: 590 gr.
G00001624	VVPP5DV	VOLUMETRIC DOSER VVPP5DV Precision impulsive volumetric doser with divorced technology and special shutter for aggressive/abrasive products. Maximum product supply pressure 14bar. Maximum compressed air pressure 10bar. Used with products with a tendency to dry, reticulate or polymerise (like resins) we suggest to jump the terminal nozzle into neutral oil, during the breaks, or to close it with the proper cap that will be later removed, at the following shift. In case of products with short pot life (such as two-components resins) an automatic periodic purge of the nozzle may be necessary. Dosing range from 0,020 to 0,250cc. <u>Pay attention: do not remove the inlet valve.</u> Approx. weight: 590 gr.
G00002348	VVPP8DV	VOLUMETRIC DOSER VVPP8DV Precision impulsive volumetric doser. Double-acting pneumatic operation. Precision impulsive volumetric doser with divorced technology and special shutter for aggressive/abrasive products. Maximum product supply pressure 14bar. Maximum compressed air pressure 10bar. Used with products with a tendency to dry, reticulate or polymerise (like resins) we suggest to jump the terminal nozzle into neutral oil, during the breaks, or to close it with the proper cap that will be later removed, at the following shift. In case of products with short pot life (such as two-components resins) an automatic periodic purge of the nozzle may be necessary. Dosing range from 0,050 to 0,750cc. <u>Pay attention: do not remove the inlet valve.</u> Approx. weight: 590 gr.
G00001721	VVPP10DV	VOLUMETRIC DOSER VVPP10DV Precision impulsive volumetric doser with divorced technology and special shutter for aggressive/abrasive products. Maximum product supply pressure 14bar. Maximum compressed air pressure 10bar. Used with products with a tendency to dry, reticulate or polymerise (like resins) we suggest to jump the terminal nozzle into neutral oil, during the breaks, or to close it with the proper cap that will be later removed, at the following shift. In case of products with short pot life (such as two-components resins) an automatic periodic purge of the nozzle may be necessary. Dosing range from 0,2 to 1cc. <u>Pay attention: do not remove the inlet valve.</u> Approx. weight: 590 gr.

SPARE PARTS KIT	VVPP3DV	G00001860	RECONDITIONMENT CODE	VVPP3DV	R000G1568
SPARE PARTS KIT	VVPP5DV	G00001859	RECONDITIONMENT CODE	VVPP5DV	R000G1624
SPARE PARTS KIT	VVPP8DV	G00003265	RECONDITIONMENT CODE	VVPP8DV	R000G2348
SPARE PARTS KIT	VVPP10DV	G00003698	RECONDITIONMENT CODE	VVPP10DV	R000G1721

EXAMPLES OF SYSTEMS

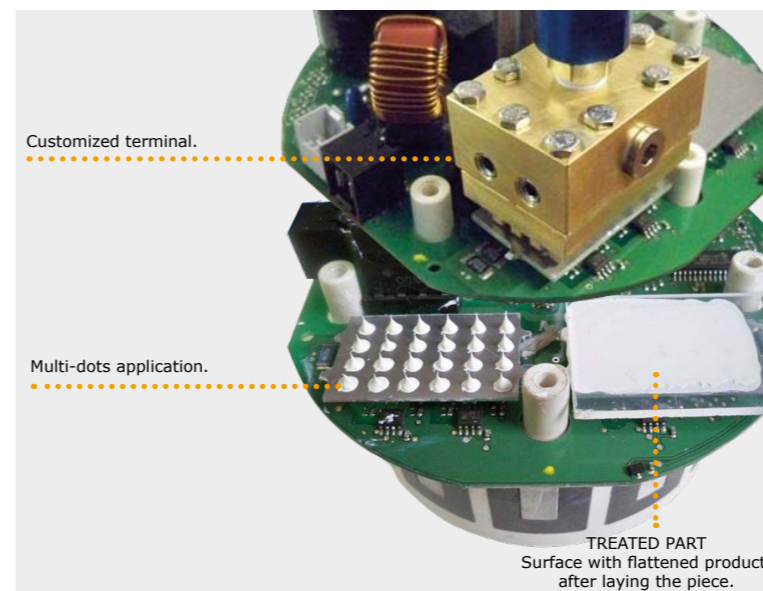


Example of volumetric dosers battery, to make multiple doses on assembling lines both automatic and semi-automatic.

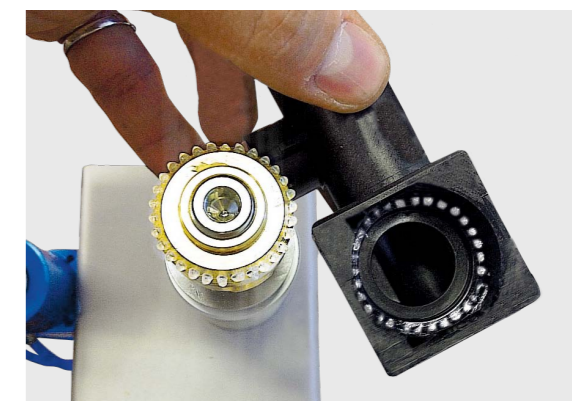


Example of a bench manual dosing station, with dosers **VVPP5DV**.

APPLICATION EXAMPLES



Volumetric dosing of abrasive heat conductive paste made by a multi-dots technique, using a special customized terminal. Total dose of around 0,6cc, distributed over 24 dots, on an area 40x25mm. This multi-dots application was required to obtain a homogeneous paste gap between two surfaces in contact. Doser model **VVPP8DV**, supplied by an extrusion pump **PE25C501**. Station timing 3s.



Micro dosing of high consistency silicon grease inside of a circular area Ø25mm, before the assembling of a piece with O-ring, part of the hot water collectors on boilers. Dose of about 0,05cc. Manual station aside an automatic line. Doser model **VVPP5DV** equipped with customized radial terminal. The unit is supplied by a **SB4-AUTO** tank, previously charged of degassed grease (degassing process made by a **VACUUM TOWER TM**'s machine).

OPTIONAL ACCESSORIES

Technical Code	Commercial Code	Description	Technical Code	Commercial Code	Description
			G00003900	AIVP DV	Standard pneumatic vertical handle. For divorced dosers.
			G00003901	AIVPSF DV	Pneumatic vertical handle with sensor VSF. For divorced dosers.
			G00003902	AIVPPZO DV	Pneumatic vertical handle with sensor PZ for oils. For divorced dosers.
			G00003903	AIVPPZG DV	Pneumatic vertical handle with sensor PZ for greases. For divorced dosers.
			G00003904	AIVE DV	Standard electric vertical handle.
			G00003905	AIVESF DV	Electric vertical handle with sensor VSF. For divorced dosers.
			G00003906	AIVEPZO DV	Electric vertical handle with sensor PZ for oils. For divorced dosers.
			G00003907	AIVEPZG DV	Electric vertical handle with sensor PZ for greases. For divorced dosers.
			G00000245	AVSAWPP	Activation control for doser VVPP and VVPPDV. It verifies the doser activation and the pneumatic piston movement, at each cycle.
			G00000750	AIPE	Gun handle electrically operated
			G00000307	AIPP	Gun handle pneumatically operated